



New Standard Hemp Company

Sample 614-062624-016

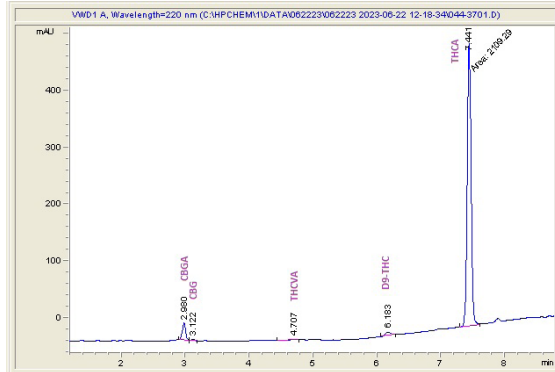
KOP

Sample Submitted: 06-26-2024; Report Date: 06-28-2024

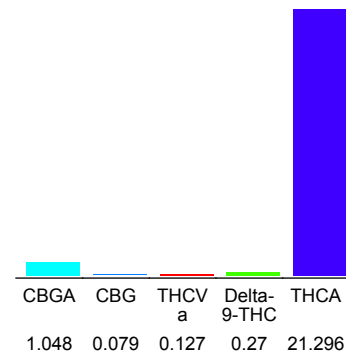
KOP THC-A Hemp

Plant Material: Flower

Chromatogram



Cannabinoid Profile



Cannabinoid Profile by HPLC

0.27%
Delta-9-THC

0.00%
CBD

22.82%
Total Cannabinoids

Cannabinoid	% wt	mg/g
CBGA	1.048	10.48
CBG	0.079	0.79
THCVa	0.127	1.27
Delta-9-THC	0.27	2.7
THCA	21.3	212.96
Total Cannabinoids	22.82	228.2
Calculated Total THC	18.95	189.47
Calculated CBD Yield	0.00	0.00

Calculated Total THC = Delta-9-THC + 0.877 * THCA
 Calculated Maximum CBD Yield = CBD + 0.877 * CBDA

Marin Analytics, LLC
 250 Bel Marin Keys Blvd, Suite D4
 Novato, CA 94949
 833-321-TEST / info@marinanalytics.com

Sara Biancalana
Sara Biancalana
 Chief Scientist

This sample has been tested by Marin Analytics, LLC using valid testing methodologies and a quality system. Values reported relate only to the sample tested. Marin Analytics, LLC makes no claims as to the efficacy, safety, or other risks associated with any detected or non-detected levels of any compounds reported herein. This Certificate shall not be reproduced except in full without the written approval of Marin Analytics, LLC. Copyright 2023 Marin Analytics, LLC All Rights Reserved.